

# OSSM, Orchard Hills, NSW 2748

## Landscape Documentation for Development Application



IMAGE TAKEN FROM NEARMAP 2024

### PLANTING SCHEDULE

Code	Botanical Name	Common Name	Mature Height	Spacing	Install Size	Shale Plain Woodlands	Native	Qty*
Trees								
CUP ANA	<i>Canapiopsis anacardioides</i>	Tuckeroo	8m	As Shown	25L		✓	3
EUC MOL	<i>Eucalyptus moluccana</i>	Grey Box	25m	As Shown	75L	✓	✓	2
MEL STY	<i>Melaleuca stypheloides</i>	Prickly-leaved Paperbark	10m	As Shown	75L		✓	2
WAT FLO	<i>Waterhousia floribunda</i> 'DOW20' Sweeper	Weeping Lilly Pilly	10m	As Shown	25L		✓	5
Shrubs								
ACM smi	<i>Acmena smithii</i> 'DOW30'	Sublime	1.5m**	1000mm Ctrs	200mm		✓	54
LEP for	<i>Leptospermum 'Foreshore'</i>	Tea Tree	0.5m	500mm Ctrs	200mm		✓	153
LIS str	<i>Lissanthe strigosa</i>	Peach Heath	1m	As Shown	200mm	✓	✓	49
WES blu	<i>Westringia hybrid</i> 'WES03'	Blue Gem Westringia	1m	As Shown	200mm		✓	27
Accent Shrubs								
DOR exc	<i>Doryanthes excelsa</i>	Gynea Lily	2-4m	As Shown	200mm		✓	17
Grasses & Groundcovers								
ASP con	<i>Asperula conferta</i>	Common Woodruff	0.3m	3/m2	140mm	✓	✓	65
ANI bus	<i>Anigozanthos 'Bush Diamond'</i>	White Kangaroo Paw	0.5m	4/m2	140mm		✓	131
DIA bre	<i>Dianella caerulea</i> 'Breeze'	Blue Native Flax	0.7m	5/m2	Tubestock		✓	513
DIA lon	<i>Dianella longifolia</i>	Smooth Native Flax	1m	4/m2	Tubestock	✓	✓	87
DIC rep	<i>Dichondra repens</i>	Kidney Weed	0.15m	3/m2	140mm	✓	✓	210
LOM con	<i>Lomandra confertifolia</i> 'LM700'	Pacific Sky Mat Rush	0.75m	5/m2	Tubestock		✓	470
LOM mul	<i>Lomandra multiflora</i>	Many Flower Mat Rush	0.85m	4/m2	Tubestock	✓	✓	87
LOM nya	<i>Lomandra longifolia</i> 'Nyalla'	Spiny Head Mat Rush	0.8m	5/m2	Tubestock		✓	942
LOM tan	<i>Lomandra longifolia</i> 'LM300'	Lomandra Tanika	0.5m	5/m2	Tubestock		✓	464
PRA pur	<i>Pratia purpurascens</i>	White Root	0.3m	3/m2	140mm	✓	✓	168
SCA aem	<i>Scaevola aemula</i> 'Fairy White'	White Fan Flower	0.3m	3/m2 OR 2/Lm	140mm		✓	107
WES low	<i>Westringia fruticosa</i> 'WES06'	Low Horizon Westringia	0.3m	3/m2 OR 2/Lm	140mm		✓	54
Total Plant Numbers								3610

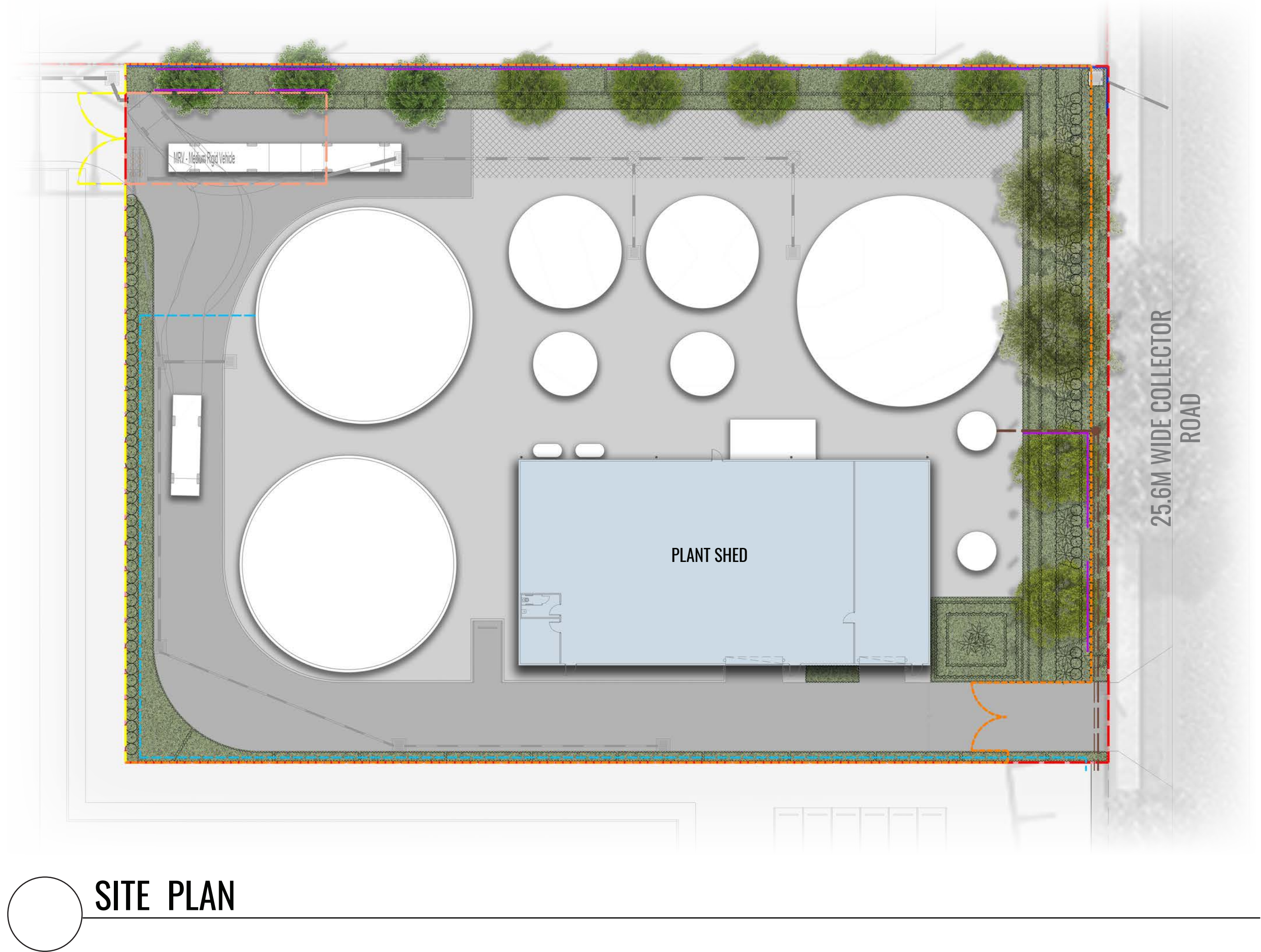
\* To be finalised during CC/Tender

\*\* Plants to be trimmed to heights indicated

### Drawing Register

Dwg No.	Drawing Name
LDA-00	Landscape Cover Sheet
LDA-01	Landscape Master Plan
LDA-02	Landscape Section AA
LDA-03	Typical Landscape Frontage Section
LDA-04	Specification, Details & Planting Schedule

Appendix  
11178\_DA280 OSSM Irrigation - Indicative Irrigation Plan (Plan By Nettleton Tribe)



SITE PLAN

Drawing Title:  
**Landscape Cover Sheet**  
DWG No:

**LDA-00**

**GEOSCAPES**  
LANDSCAPE ARCHITECTS  
Suite 303, 8 Help Street, Chatswood NSW 2067 Ph. (02) 9411 1485  
www.geoscapes.com.au  
ABN 84 620 205 781 ACN 620 205 781

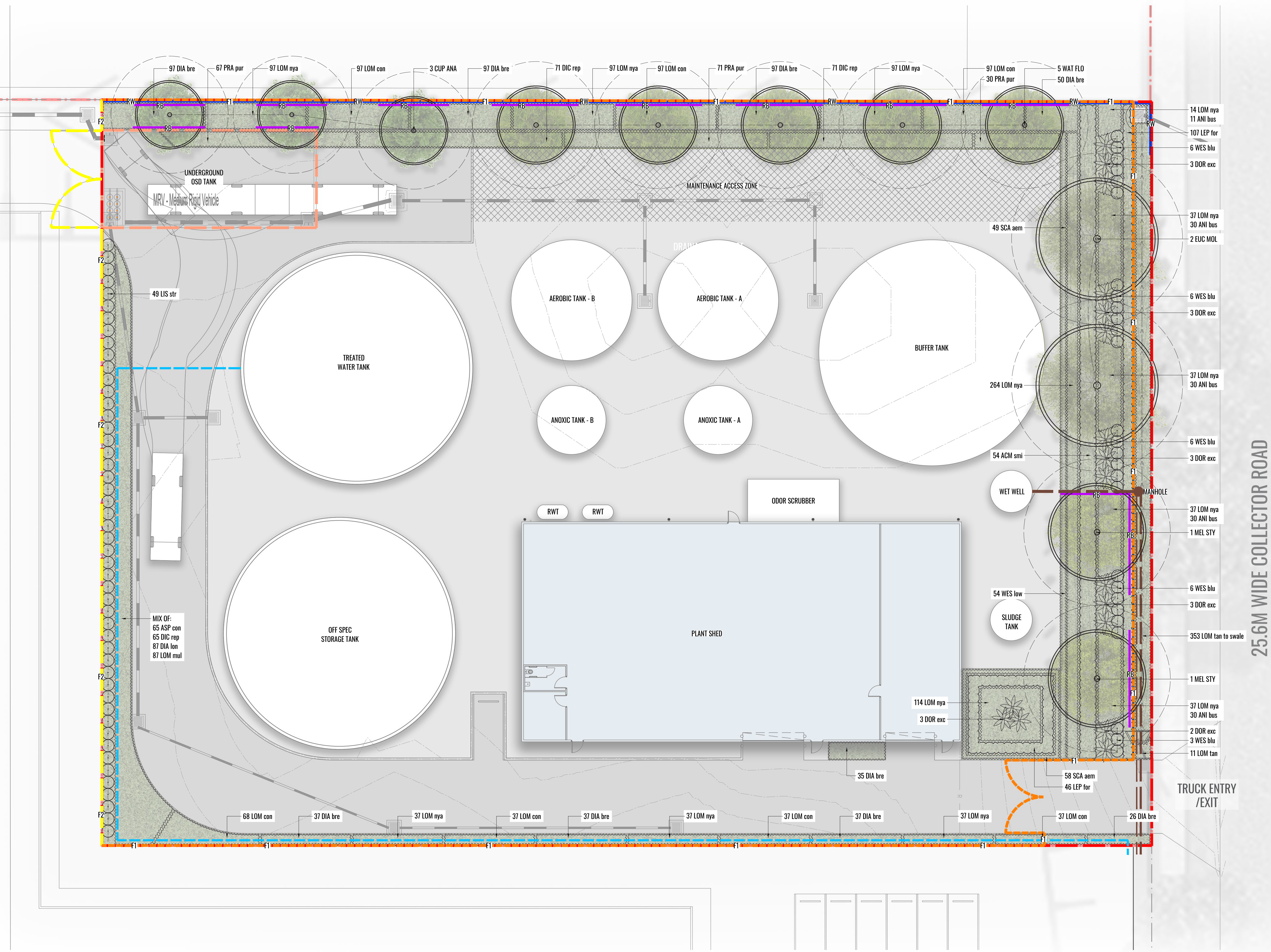
Architect:  
**nettletontribe**  
architecture

Client:  
**alspec**  
INDUSTRIAL BUSINESS PARK  
**PROPERTY**

Scale:	Date:	Job Number:	North:	Revision	FOR DEVELOPMENT APPLICATION	
NTS	04.02.25	240612	↑	Rev	Date	Description
Project:				<b>A</b>	10.07.24	DRAFT FOR REVIEW
				<b>B</b>	24.07.24	FOR DA
				<b>C</b>	31.01.25	FOR DA
				<b>D</b>	04.02.25	FOR DA
OSSM Orchard Hills, NSW 2748				Drawn	Checked	
				PT	BG	
				PT	BG	
				PT/SK	BG	

NOT FOR CONSTRUCTION





LEGEND

SITE BOUNDARY

PROPOSED TREE PLANTING

MASS HEDGE/SHRUB PLANTING

ACCENT/FEATURE PLANTING

PROPOSED GROUNDCOVER PLANTING

UNDERGROUND OSD TANK / RAINWATER TANK

RETAINING WALL TO ENGINEERS DETAILS

FENCE TYPE 1 - 2.1m HIGH BLACK PAUSADE FENCE TO ARCHITECTS DETAILS

FENCE TYPE 3 - 1.8m HIGH BLACK CHAIN LINK FENCE WITH BARBED WIRE TO ARCHITECTS DETAILS

DRAIN PITS TO ENGINEERS DETAILS

PROPOSED UNDERGROUND SEWER LINE

PROPOSED UNDERGROUND RECYCLED WATER LINE

ROOT BARRIER

ESTATE LANDSCAPE  
WORKS SUBJECT  
TO SEPARATE DA

Drawing Title:  
**Landscape Master Plan**  
DWG No:

**LDA-01**

GEOSCAPHES

LANDSCAPE ARCHITECTS

Suite 303, 8 Help Street, Chatswood NSW 2067 Ph. (02) 9411 1485  
www.geoscapes.com.au  
ABN 84 620 205 781 ACN 620 205 781

Architect:

nettletontribe

architecture

Client:

alspec

INDUSTRIAL BUSINESS PARK

Scale:  
1:500@ A1  
1:1000@ A3

Date:  
04.02.25

Job Number:  
240612

North:

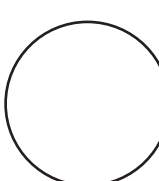
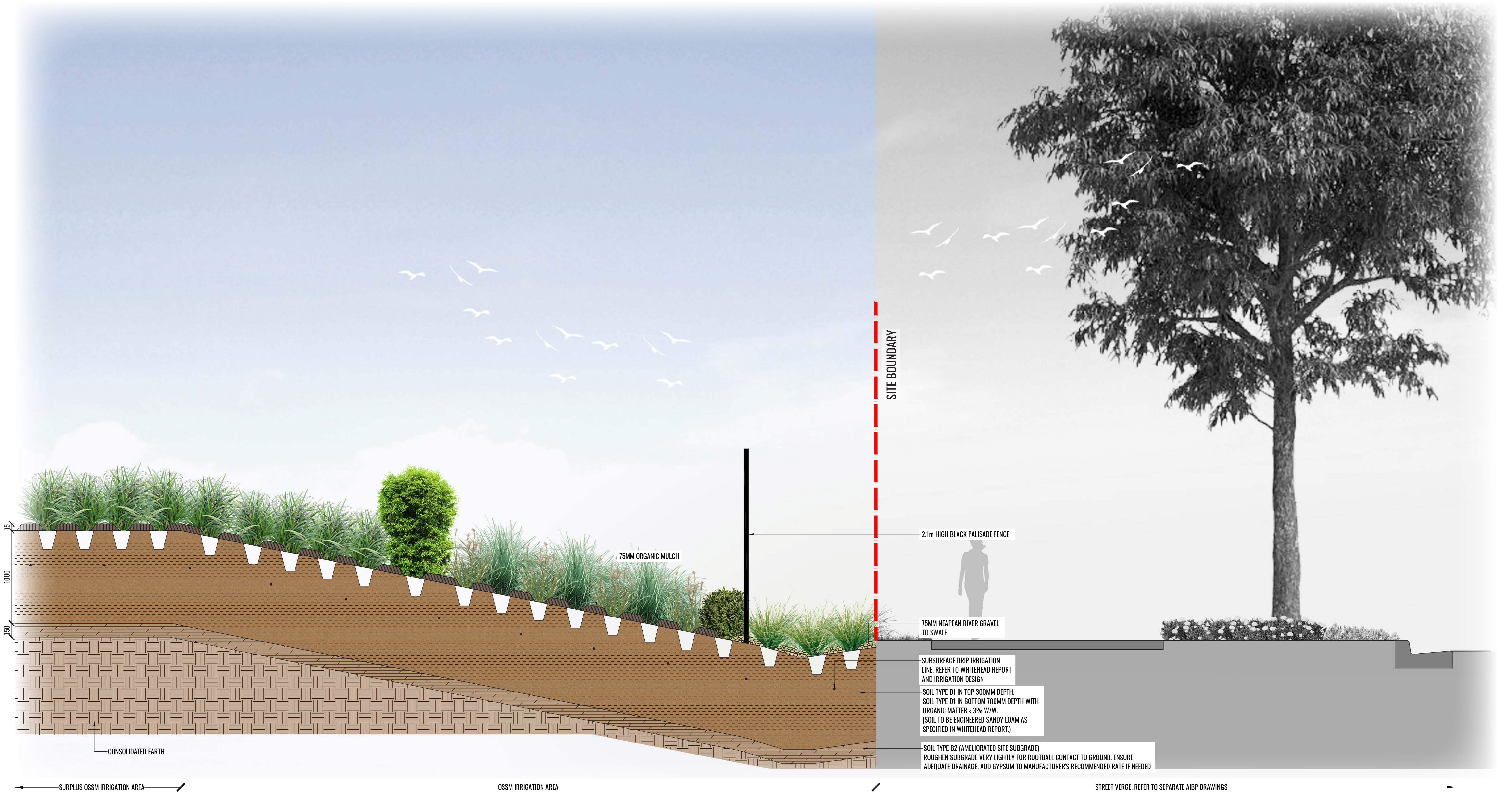
Project:

OSSM  
Orchard Hills, NSW 2748

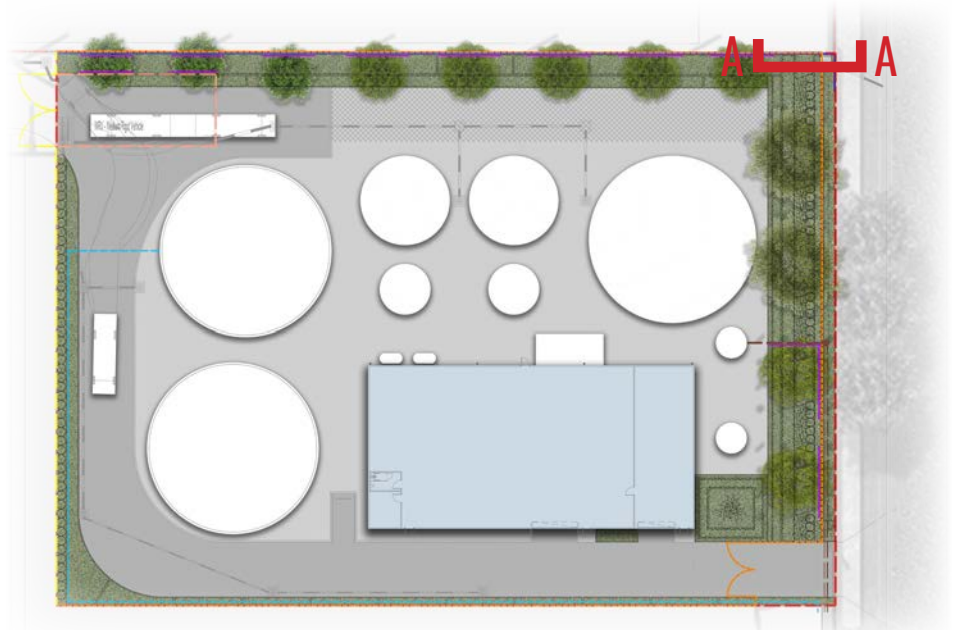
Revision		FOR DEVELOPMENT APPLICATION			
Rev	Date	Description	Drawn	Checked	
A	10.07.24	DRAFT FOR REVIEW	PT	BG	
B	24.07.24	FOR DA	PT	BG	
C	31.01.25	FOR DA	PT/SK	BG	
D	04.02.25	FOR DA	PT	BG	

NOT FOR CONSTRUCTION





**SECTION AA**  
SCALE 1:20



KEY PLAN

Drawing Title:

**Landscape Section AA**

DWG No:

**LDA-02**

**GEOSCAPES**  
LANDSCAPE ARCHITECTS

Suite 303, 8 Help Street, Chatswood NSW 2067 Ph. (02) 9411 1485  
www.geoscapes.com.au  
ABN 84 620 205 781 ACN 620 205 781

Architect:

**nettletontribe**  
architecture

Client:

**alspec**  
INDUSTRIAL BUSINESS PARK

**PROPERTY**

Scale: AS SHOWN @ A1

Date: 04.02.25

Job Number: 240612

North:

Project: OSSM  
Orchard Hills, NSW 2748

Revision			FOR DEVELOPMENT APPLICATION	
Rev	Date	Description	Drawn	Checked
A	10.07.24	DRAFT FOR REVIEW	PT	BG
B	24.07.24	FOR DA	PT	BG
C	31.01.25	FOR DA	PT/SK	BG
D	04.02.25	FOR DA	PT	BG

**NOT FOR CONSTRUCTION**





**TYPICAL LANDSCAPE FRONTAGE SECTION - EXAMPLE: COPE WAREHOUSE**  
SCALE 1:20

Drawing Title:  
**Typical Landscape Frontage Section**  
DWG No:  
**LDA-03**

**GEOSCAPES**  
LANDSCAPE ARCHITECTS  
Suite 303, 8 Help Street, Chatswood NSW 2067 Ph. (02) 9411 1485  
www.geoscapes.com.au  
ABN 84 620 205 781 ACN 620 205 781

Architect:  
**nettletontribe**  
architecture

Client:  
**alspec**  
INDUSTRIAL BUSINESS PARK  
**PROPERTY**

Scale:	Date:	Job Number:	North:	Revision					FOR DEVELOPMENT APPLICATION	
				Rev	Date	Description	Drawn	Checked		
AS SHOWN @ A1	04.02.25	240612		<b>A</b>	10.07.24	DRAFT FOR REVIEW	PT	BG		
				<b>B</b>	24.07.24	FOR DA	PT	BG		
				<b>C</b>	31.01.25	FOR DA	PT/SK	BG		
				<b>D</b>	04.02.25	FOR DA	PT	BG		

Project: OSSM Orchard Hills, NSW 2748

**NOT FOR CONSTRUCTION**



Maintenance shall mean the care and maintenance of the landscape works by accepted horticultural practice as rectifying any defects that become apparent in the landscape works under normal use. The landscape contractor shall attend the site on a **weekly basis** to maintain the landscape works commencing from practical completion.

The Landscape Contractor shall undertake rubbish removal from the site on a **weekly basis** to ensure the site remains in tidy condition.

Weed growth that may occur in grassed, planted or mulched areas is to be removed using environmentally acceptable methods i.e. non-residual glyphosate herbicide (e.g. 'Roundup', applied in accordance with the manufacturer's direction).

Trees shall show signs of healthy vigorous growth and be free from disease and not exhibit signs of stress prior to handover to the client. Any trees or plants that die or fail to thrive, or are damaged or stolen will be replaced. Replacement material shall have the initial maintenance period extended in accordance with the landscape contract conditions. Trees and plant materials shall be equal to the minimum requirements of species specified and approved material delivered to site. Should the condition decline from the approved sample the Superintendent reserves the right to reject the tree / plants.

Frequency: as required.

Adjust and/or replace stakes and ties where required. Remove staking and guying when instructed by the Superintendent

Selective pruning may be required during the establishment period to promote a balanced canopy structure. These activities shall be carried out to the best horticultural and industry practice. All pruned material is to be removed from site.

All planter beds and garden areas shall have a minimum depth of 75mm organic mulch. All mulch is to be free of deleterious matter such as soil, weeds, sticks and should conform to AS 4454.

Mulched surfaces are to be kept clean and tidy and free of any deleterious material and foreign matter. Reinstall depths to a uniform level of 75mm with mulch as specified, mulch to be free of any wood material impregnated with CCA or similar toxic treatment. Top up mulch levels prior to handover to client & estate management.

All soils to conform to the landscape typical details shown in GEOSCAPES drawings. For soils in locations where Recycled Water is used for irrigation, refer to soil specs from Whitehead & Associates Environmental Consultants documentation and project specific advice from SESL documentation.

The Landscape Contractor shall spray for pests and disease infestations when the pest and fungal attack has been positively identified and when their populations have increased to a point that will become detrimental to plant growth. Apply all pesticides to manufacturer's directions.  
Frequency: weekly inspection

Generally, check for signs of nutrient deficiencies (yellowing of leaves, failure to thrive), and adapt fertiliser regime to suit. Fertiliser should be applied at the beginning and the end of the (summer) growing season.

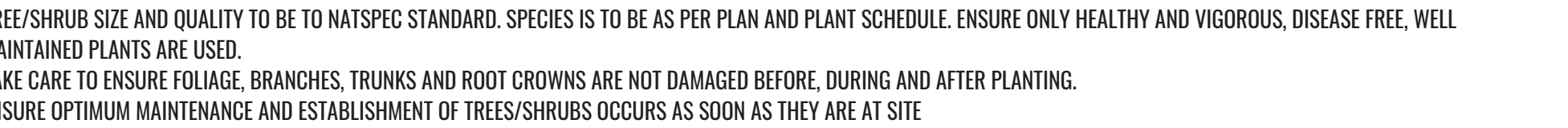
Irrigation will be provided through two systems. The first will be delivered through water treated at the OSSM, the second will be delivered through harvested rainwater. The Recycled Water and harvested rainwater are used in specific landscape areas as shown in the Appendix on NettletonTribe Plan 11178\_DA280. The fully automatic irrigation system has been designed by Total Irrigation Design and these drawings and specifications should be used for design and installation.

All grown or purchased plant stock must conform to all the conditions and requirements given in NATSPEC Guide: Specifying Trees. Soils to be in accordance with AS4419, mulching composts and conditioners to be in accordance with AS4454. Soils should conform to best practice specifications as listed in the Landscape Soils Handbook (Simon Leake & Elke Haeger 2017).

TREE/SHRUB SIZE AND QUALITY TO BE TO NATSPEC STANDARD. SPECIES IS TO BE AS PER PLAN AND PLANT SCHEDULE. ENSURE ONLY HEALTHY AND VIGOROUS, DISEASE FREE, WELL MAINTAINED PLANTS ARE USED.

TAKE CARE TO ENSURE FOLIAGE, BRANCHES, TRUNKS AND ROOT CROWNS ARE NOT DAMAGED BEFORE, DURING AND AFTER PLANTING.

ENSURE OPTIMUM MAINTENANCE AND ESTABLISHMENT OF TREES/SHRUBS OCCURS AS SOON AS THEY ARE AT SITE



REFER TO APPENDIX (NETTLETON TRIBE DRAWING 11178\_DA280) FOR AREAS TO BE IRRIGATED WITH RECYCLED WATER OR RAINWATER

ROOT BARRIER 1M DEEP

MEMBRANE

AG DRAIN  
CONNECTED TO  
STORMWATER

NOTE :  
ALL SLEEPER WALL DETAILS AND HEIGHT TO  
FOLLOW STRUCTURAL ENGINEERS DETAILS

3 TYPICAL SECTION SCALE 1:40

**GEO SCAPES**  
LANDSCAPE ARCHITECTS

Suite 303, 8 Help Street, Chatswood NSW 2067 Ph. (02) 9411 1485  
[www.geoscapes.com.au](http://www.geoscapes.com.au)  
ABN 84 620 205 781 ACN 620 205 781

Client:

**alspec**  
INDUSTRIAL BUSINESS PARK

**PROPERTY**<sup>®</sup>

Scale:	Date:	Job Number:	North:	Revision FOR DEVELOPMENT APPLICATION				
AS SHOWN @ A1	04.02.25	240612		Rev	Date	Description	Drawn	Checked
				<b>A</b>	10.07.24	DRAFT FOR REVIEW	PT	BG
				<b>B</b>	24.07.24	FOR DA	PT	BG
				<b>C</b>	31.01.25	FOR DA	PT/SK	BG
				<b>D</b>	04.02.25	FOR DA	PT	BG
<b>Project:</b>		OSSM Orchard Hills, NSW 2748						

**NOT FOR CONSTRUCTION**

# APPENDIX



ALSPEC INDUSTRIAL BUSINESS PARK	
13-Aug-24	DA280
TOTAL LANDTAKE (m²)	1,253,773
TOTAL IRRIGATION AREA ACHIEVED (ha)	21.50
Other Site Stormwater Catchments Via Bioretention And Storage Ponds (ha)	13.80
Collector Road and Patons Lane landscape strips (ha)	0.78
OSSM Treated Water Irrigation Area (ha)	3.65
Harvested Rainwater and Stormwater Irrigation Area (ha)	3.27
TOTAL IRRIGATION AREA REQUIRED (ha)	18.44
NW and SE catchments (ha)	11.44
NE catchment on Lot 1 (ha)	0.47
Rainwater tanks on lots (ha)	2.88
Treated water from OSSM Facility (ha)	3.65
IRRIGATION AREA SURPLUS (ha)	3.06



6/17/2024 3:27:14 PM C:\Users\manning\Documents\1178\_LUDDENHAM ICAD CIRCULAR FILE\_A\ALSY\_CENTRAL\_AreaCheck.vxd

Client

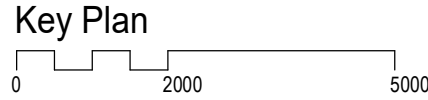


Issue	Description	Date
D	ISSUED FOR INFORMATION	30/10/24
C	ISSUED FOR INFORMATION	15/08/24
B	ISSUED FOR INFORMATION	14/08/24
P7	ISSUED FOR INFORMATION	12/08/24
P6	ISSUED FOR INFORMATION	29/07/24
P5	ISSUED FOR INFORMATION	17/07/24
P4	ISSUED FOR INFORMATION	17/07/24
P3	ISSUED FOR INFORMATION	16/07/24
A	ISSUED FOR INFORMATION	11/06/24
P2	ISSUED FOR INFORMATION	06/06/24
P1	ISSUED FOR INFORMATION	20/05/24

Builder and/or subcontractors shall verify all project dimensions before commencing on-site work or off-site fabrication. Figured dimensions shall take precedence over scaled dimensions. This drawing is copyright and cannot be reproduced in whole or in part or by any medium without the written permission of Nettleton Tribe Partnership Pty Ltd.

Project Name  
**Alspec Industrial Business Park**

Project Address  
**Luddenham Road, Orchard Hills NSW**



Drawing Title:  
**OSSM IRRIGATION - Indicative Irrigation Plan**

Author:  
**MJ**

Checker:  
**NG**

Sheet Size:  
**A1**

Scale:  
**1:3000**

Drawing Number:  
**11178\_DA280**

Issue:  
**D**

**nettletontribe**

nettleton tribe partnership Pty Ltd ABN 58 161 683 122  
117 Willoughby Road, Crows Nest, NSW 2065  
t +61 2 9431 6431  
e: sydney@nettletontribe.com.au w: nettletontribe.com.au